

# Creative CORNER



“LET’S SHARE OUR EXPERIENCE!”

Over the coming months, try out some of these ideas in your community:

It is exciting to encounter and learn from each other.

Please do take videos and pics and upload them to the Facebook members page:

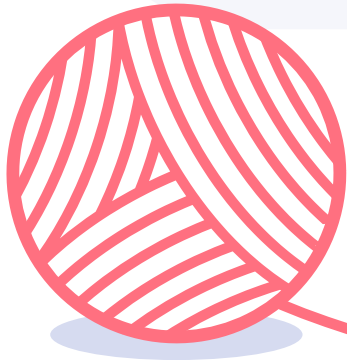
[bit.ly/larche\\_members](https://bit.ly/larche_members)

Matt Rawlins



Creative Coordinator

IFA2023



## Introduction

We can use an object, words, photos, drawings, as symbols to help us prepare and learn more about ourselves. We can share about the symbols, why we chose them, what they mean, to get to know each other.

## Connections and strands

Wool, yarn, rope, string, is often composed of many tiny fibers, twisted, and intertwined forming strands.

For a rope or cord they can be strengthened. A cord of three strands is stronger than one strand or two. The same is said of the strength shared across a wider surface, like when yarn is knit into a piece of fabric, or a net is fashioned with many knots.

Humans have been working with String and Cord as far back as we know. It connects us to our past. It will continue to be with us as it is re-invented, re-purposed and developed. Just think of our network of cables distributing electricity and information.

In L'Arche, we have used string, yarn, rope in so many creative ways, from the hammocks of Honduras, to the rugs and placemats of Kent, woven textiles and sewing from Dornach, L'Arche Im Nauen, and the delicately embroidered cards from Ukraine.

In preparing for our time together in June, we invite you to find a ball of yarn or a spool of thread in its unused form - full of potential- and then also to make something using string, yarn, or thread as symbol of connection.



PICTURE CREDIT

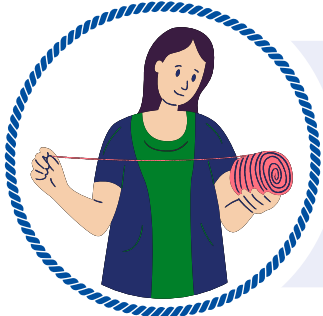
Elodie Perriot:  
IFA: Belfast 2017

“A cord of three strands is stronger than one strand or two.”



## To go DEEPER:

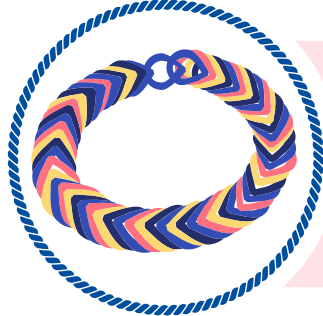
You can build on that: for instance, use the string to show connections on your map of the world.



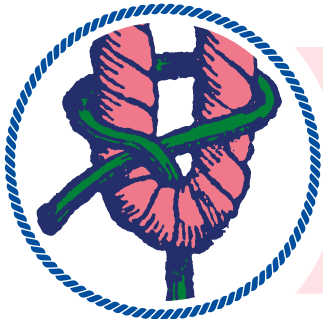
Help to tell a story or create a quilt panel.



Some people might like to create a prayer rope / bracelet, as a way of helping their prayer.



Help show someone you care by making them a friendship bracelet.



Help hold things together, fix or join objects.



Help you explore, together or on your own, check out some textile artists in your tradition or one you are interested in.

### ARTIST PROFILE: Cecilia Vicuña's

Symbols of Interconnection with Chilean Artist Cecilia Vicuña's - "Brain Forest Quipu" [bit.ly/bfq\\_tate](https://bit.ly/bfq_tate)



**WATCH:** 360° walk-through of the work. [bit.ly/bfq\\_tate\\_360](https://bit.ly/bfq_tate_360)



CREDIT: dgeezer www.flickr.com

### ARTIST PROFILE: Simone Pheulpin

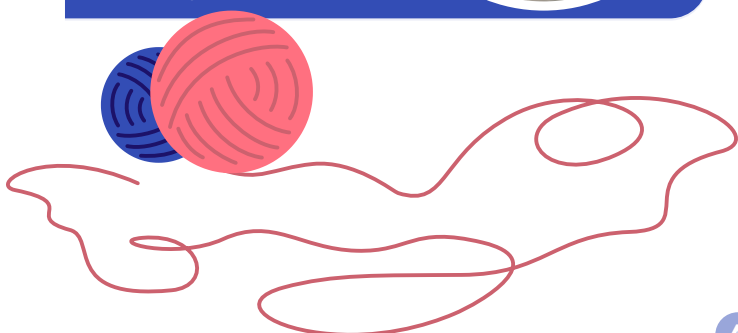
Symbols of growth and decay, time and repetition. French Artist Simone Pheulpin's cotton sculptures [bit.ly/pheulpin\\_info](https://bit.ly/pheulpin_info)



**WATCH:** Pheulpin talking her about process Auto-generated captions available [bit.ly/pheulpin](https://bit.ly/pheulpin)



CREDIT: fr.wikipedia.org



## Sharing TOGETHER:

How do you use String?

In your opinion, what is the most creative use of string you've encountered?